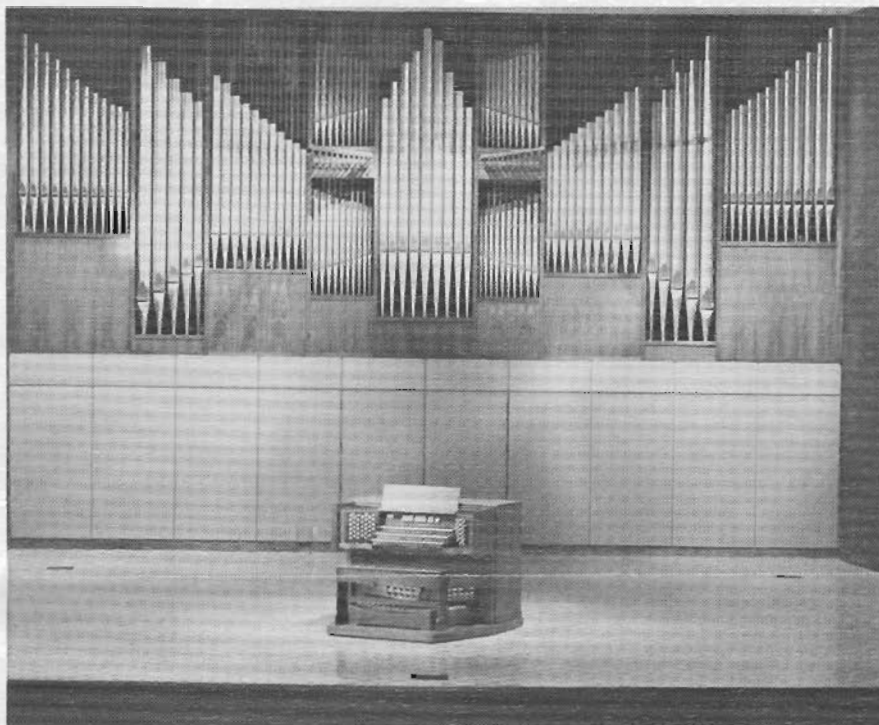


W
T
S
U

RITORNELLO

DEPARTMENT OF MUSIC

VOLUME II NUMBER 1
FALL 1978



Reuter Organ in Mary Moody Northen Recital Hall



Mary Ruth McCulley

The Organs of Northen Hall

Organ students at WTSU have the exciting opportunity for daily practice on one of **five** pipe organs as the 1978 school year begins. First to be completed were the two practice instruments of two ranks each. They are located on the second floor. Former students will remember the five rank Holtkamp in the FAB which is also designated for student use.

Next to be installed was the Studio Organ with seventeen stops and twenty ranks of 1109 pipes. The Studio must be seen to be believed. In the shape of a triangle, it rises two stories in height, providing seating for fifty. The Studio has stunning acoustical properties. Our guests react with delight to the magnificence in sound and sight of this organ.

The Recital Hall Organ was completed just prior to the dedication recital, February 12, 1978. Gerre Hancock, St. Thomas Church, New York City, played to a standing-room-only audience which received him and the organ with tremendous enthusiasm and gratitude for a shared dream come true. This instrument has 49 stops, 63 ranks, and 3417 pipes.

Our special pride is the Trumpet **en chamade** rank. Pipes project horizontally from the organ case so that the sound is directed toward the center of the hall. This not only makes them sound louder to the listener, but also increases the brilliance of their quality.

Throughout the remainder of the semester, the Recital Organ was used in approximately fifteen student, senior, and graduate recitals, large ensemble presentations, and fraternity programs.

The 1978-79 guest organist series includes Roy Wilson and the Chamber Musicians on September 17, Edgar Krapp, distinguished young European organist who is sponsored by the Special Programs Committee on October 3, and Kathryn Johnson, organist of Northaven United Methodist Church in Dallas, playing March 4.

The studio class has been requested to provide three programs for civic groups and study clubs during this academic year. Jennie Lynn Gunter will be presented in her senior recital in March.

We take enormous pride in sharing our superb facilities with old friends and new. Those of you within reasonable travelling distance are always encouraged to bring young

pianists and organists to visit us. Furthermore, we anticipate our visits with you! Plan now to hear at least one of the organ concerts this year.

M.R. McC.

New Orchestra Conductor

(As of this fall, Dr. Gary Garner will be the conductor of the University Orchestra. Editor)

The WT Orchestra is looking forward to a period of progress and growth. While the number of strings at present is small, the quality is excellent. In addition, the orchestra winds are among the finest players on campus. The first program, scheduled for October 29, will include "Russian Sailors' Dance" by Gliere, "Egmont" Overture by Beethoven, "Outdoor" Overture by Copland, and "Capriccio Espagnole" by Rimsky-Korsakov.

The addition of Mr. John Sumerlin to the string faculty has already proved to be a great asset to the program. He has been very active in visiting high school orchestras in Amarillo and Hereford and working with their string players. We are confident that his efforts, along with those of our fine cellist, Dr. Sara Montgomery, will result in a substantial growth in strings next year.

G.G.

From the Editor's Desk

Summer has slipped away and most of us are back at work, struggling to make both ends meet in these difficult, inflationary times; hopefully our work is pleasant and stimulating. Many are teaching in the elementary and secondary schools; several WT graduates are involved in activities other than teaching. In this issue of *Ritornello* we will introduce our news column telling you of your various activities, that is, we will if you have written to let us know what these are. The response to the first issue of *Ritornello* was very gratifying: the letters and personal visits we received from you all made the efforts to get it in your hands worth while. (Nor have I forgotten the beautiful and huge cake which the music faculty provided at a faculty meeting when *Ritornello* made its debut last spring. We had a real "coming out" party!) We are genuinely interested in every one of you, so if you have not already sent news of your family and your activities, please plan to do so in time for the spring issue. It would help if you would include the year you graduated and the degree you earned.

One of our most ambitious, but, I believe, most important projects, is to build up as complete an information file on our alumni and ex-students as possible. We feel fortunate to have secured the interest and cooperation of our indefatigable and highly competent departmental detective, Mrs. Martha Morris, in this venture, and as a result, the venture is off to a good start. Martha's card file already contains information on over 400 people, but it is expandable to several times its present size. In her official capacity, Martha presides over the music library with, I might add, the same strong detective instinct she uses to search out your present name, address, and occupation. She will help, if you will.

It is difficult to believe that so many changes have taken place in the music department since we last visited with you through this column. Among the faculty, some familiar faces are no longer with us, old ones have returned and new ones have appeared on the scene. These changes are chronicled for you in the



M. Gaume

present issue. Rumor has it that the current crop of music students contains some very talented people, about whom I'm sure we'll be hearing more later. Several feature stories highlight the many activities of the department and we hope you will enjoy reading about them also. One of the most ambitious and exciting of these is the mounting of Royal Brantley's opera "Samuel," scheduled for performance November 16 through 19.

Finally, we hope more and more of you will find occasion to visit the campus and see for yourselves our ever expanding facilities and also to enjoy the increasingly excellent performances of our and, in many cases, your students.

John Green Leaves — Sanders Steps In

After 14½ years at WTSU, Dr. John E. Green, Dean of the School of Fine Arts, accepted a similar position at the University of Southern Mississippi and has moved to Hattiesburg. Dr. Green came to our campus in the spring of 1964 and served as head of the music department until 1970; from 1969 until August of this year, he served as Dean of the School of Fine Arts. We were all saddened to learn of his decision to leave as his tenure was a time of remarkable growth; creation of the School of Fine Arts, organization of the Friends of Fine Arts, and of course, the building of Mary Moody Northern Hall. Best wishes John, Jo and family!!

Dr. Hugh Sanders has been appointed Acting Dean of the School of Fine Arts. We are all very pleased that we have among our own people the talent to assume the leadership when called upon. Dr. Sanders will continue to conduct the WTSU Chorale and teach applied conducting. This is indeed a busy year for him as the Chorale will travel to Kansas City in March to appear at the National Convention of the American Choral Directors Association.

H.H.

Band Activities

The year got off to a fast start with our out-of-town trip coming a end of the first week of classes. The band travelled to Arlington on September 9 for the game with UTA. It was a very successful and enjoyable trip, particularly so since a trip to the Metroplex area always affords an opportunity to see and visit with many former band members. One of the highlights for the band was a banquet on Friday evening with a lavish spread catered by Vance Godby's.

A new addition to this year's marching band is a group of 18 flag girls. The girls have amazed and delighted band members and audiences alike with their expert flag work. Chief architect of their expertise is Denise Harman, head flag girl and a transfer this year from UTA.

Something else new on the band scene at WT this fall has been the formation of a wind ensemble. The ensemble will be active during the first semester only. Its first concert was

held on October 8. They will perform also later in the month on the composers' symposium.

Tentative plans for the annual Symphonic Band concert tour are to travel to the Midland-Odessa and El Paso areas. We look forward to seeing the many graduates who are living there.

G.G.

The Acting-Dean Speaks

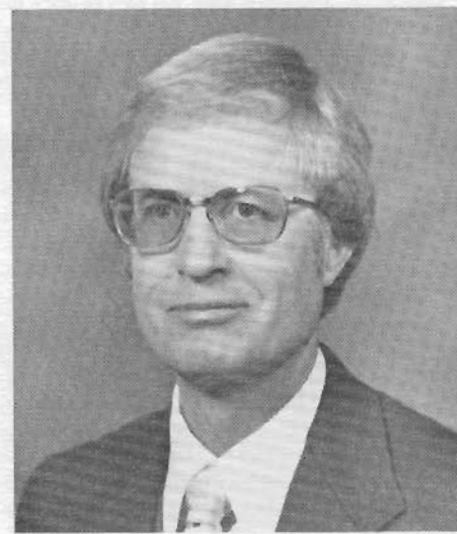
The following paragraph was taken from remarks addressed to the first general meeting of the School of Fine Arts faculty. The tenor of the remarks indicates a source of pride that you, as a WTSU graduate, no doubt share with me.

May I say to the faculty, new to our campus this year, that I can certainly speak for your associates on the faculty. I know them to be friendly, sociable and thoroughly professional in their attitude toward their responsibilities. I know that not only are they interested in developing programs that attract superior students; they are willing to make personal contacts necessary to recruit those students. And, after attracting the students to the campus, your associates are in constant search of ways of improving their teaching and communications in order to retain those students through their degree pursuit. An additional factor attributable to the professionalism of your associates is the unselfish willingness to be of assistance to those of you new to West Texas State University.

Personally, let me say that I am excited about the prospects for the coming academic year. In the short time I have been in the Dean's office, I've sensed a feeling of real support on the part of the President and the Executive Vice-President and the entire University toward the School of Fine Arts. In turn, I pledge the support of my office toward the continued positive attitude and growth in each of the disciplines in Fine Arts.

We always look forward to having our WTSU graduates return to the campus. When you come for Homecoming, for a recital or concert, or when you are just passing through, give us a chance to visit.

H.S.



Hugh Sanders



Royal Brantley

"Samuel"

A new element enters into the history of WTSU Opera Workshop productions on opening night of November 16th in the Branding Iron Theatre on the WTSU campus. When Royal Brantley's "Samuel" goes 'on the boards,' it will mark the first performance of a WTSU opera composed by its director. Brantley, director of the opera workshop since its inception in 1954, is a man of multi-talents — teacher, actor-singer, orchestral conductor, and composer — and opera goers are in for a treat in attending WTSU's opera performance this fall.

Royal Brantley considers "Samuel" a hybrid form of musical composition, with a sound of musical theatre combined with an operatic form of sequence. One of its characteristics is that there "is no set tempo nor mood," and the composer calls it a "piece for musical theatre." Though it follows a Biblical outline, the piece presented problems in the writing, one of which was whether to let the voice of God the Lord be heard directly. Mr. Brantley finally decided to let the Lord's words be "said out loud" through the alto-tenor chorus, which becomes the Voice of Yahweh, God, the Lord.

Another problem presented itself in the writing of "Samuel" over the several years concerned in its composition: that of securing a cohesive text. The WTSU opera director began writing the opera about fifteen years ago, purely for his own satisfaction and pleasure, never intending actually to finish it. It was ten years and five textual versions later that he started the composition of the music for the final version of the story per se. Though the format follows that of the Biblical story, the composer introduces people other than the Biblical ones to point up characterization and action of plot, i.e. Samuel's pupils, the children, and the elders of Bethlehem. David's nephew, Joab, thirteen, was introduced to relieve the profundity of the bearded and robed adults. "Samuel" has the flavor of a musical with its rhythmic emphasis and the savor of an opera with its continuous thread of short song-like pieces, with no effort made to reconstruct history exactly as recorded in the Bible.

The orchestration is unusual in that it is very thin — this decision to make the instrumental accompaniment light was reached as a result of directorial years of having to cut down orchestration of imported operatic and musical scores. This became necessary in order to allow the young college voices to emerge without being covered or blurred by originally designated orchestral arrangements. The orchestra for "Samuel" consists of a woodwind quintet combined with a brass quartet for the most part, since Mr. Brantley clearly limited the number of instruments to what 'would be reasonable for college student singers.'

The leading roles are that of Samuel, the prophet in his old age, bass-baritone, to be sung by Gary Thrasher, graduate; Jesse, patriarch of Bethlehem, baritone, to be played by Rian Smolik, senior; David, youngest son of Jesse, tenor, to be performed by Carl Lorey, senior; and Nahash, mother of David, soprano, to be sung by Joyce Kendle, junior. Important secondary characters are Zeruah, Joab's mother; Joab, David's nephew; and Hannah, Samuel's old housekeeper.

Royal Brantley received the Faculty Excellence Award given in May, 1978, by the Alumni Associations' Phoenix Club, in recognition of his talents and contributions to WTSU and the School of Fine Arts, its students and patrons, and to the region as a whole. This accolade was well deserved and merited by a man who was the first recipient of the Master of Music degree in vocal performance given by the University of Texas at Austin. Mr. Brantley's first production at WTSU in 1954 was that of "Singing Billy," a folk opera, containing a great deal of worthwhile music. The second season of opera workshop featured a double bill of **Gianni Schicchi** and **In A Garden**, in which the director was aided by William A. and Margaret E. Moore, as stage director and acting coach. Eventually Brantley and the Moores were to be associated as co-directors of the musical drama, **Texas**, produced each summer in Palo Duro Canyon.

E.P.

WT To Host ASUC

West Texas State University will host the Region VI Conference of the American Society of University Composers on October 27-28, 1978. This region includes Texas, Oklahoma, Nebraska, Kansas, Missouri, and Arkansas. On Friday and Saturday evenings at 8:00 o'clock in Northen Hall there will be concerts of music composed by visiting members. Saturday afternoon a program of electronic music will be presented. Weather permitting, the tapes will be played in Palo Duro Canyon Amphitheatre; otherwise that concert will also be in Northen Hall. Papers will be presented and panel discussions will be held on Saturday morning. A demonstration, "The Flute in 20th Century Music," by Sally Turk, Mary Karen Clardy, and Brad Garner is also scheduled. All of the events are open to the public.

Regional co-chairmen are Ed Mattila, University of Kansas, and George Eason, West Texas State. Joe Nelson and Bill Davis are assisting with arrangements for the conference.

G.E.

Meet Our Graduate Assistants

Leslie Blanchard (formerly Baird), daughter of Don and Nadina and a 1978 WT graduate, is the teaching assistant in theory, teaching a section of Freshman theory. She also plays clarinet in the Amarillo Symphony.

Renay Conlin, wife of Amarillo Symphony conductor, Thomas Conlin, is a teaching assistant in voice. Renay's previous study includes a BM degree from Peabody Conservatory, Diploma from Juilliard and a Diploma from the Paris Conservatory.

Brad Garner, son of Gary and Mariellen, is a graduate assistant in band and is teaching applied flute. He is a 1978 WT graduate and is currently a representative for the Miramatsu Flute Company. He has been a student of Julius Baker for the past two summers.

Robert Simmons, a graduate of Eastern New Mexico University, is the teaching assistant in Low Brass. He is also the tubist in the Amarillo Symphony.

Billy Talley, a 1978 WT graduate, is the teaching assistant in choral activities, directing the New Day Singers and the Schola Madrigalis. He also teaches applied voice and voice classes. His summer was spent conducting the New Day Singers on a USO tour of the Caribbean.

Gary Thrasher, also a WT graduate who is a registered music therapist, is a teaching assistant in applied voice. Gary will sing the lead in the fall opera production, "Samuel," by Royal Brantley.

Ben Wakefield is serving his second year as graduate assistant in voice and piano. His undergraduate work was completed at SMU in Dallas.

Don Young, a 1977 WT graduate, is in his second year as a teaching assistant in High Brass. He is a member of the trumpet section of the Amarillo Symphony and is also teaching the second Jazz Band.

Vern Zimmerman, a 1978 WT graduate, is a teaching assistant in Woodwinds, teaching applied clarinet and saxophone.

N.B.

High School Juniors/Seniors To Receive Ritornello

If you are a Junior or Senior in High School who has attended Music Camp, written to the University, made a campus visit, or in some other way indicated your interest in music at WTSU, we are including you on our mailing list for this and future issues of our Alumni Newsletter. **Ritornello** (means "returning theme"). We think that one of the best ways to find out about our music department is to peruse the information about people who have been there. We hope you'll enjoy reading about WT's music department from this slightly different perspective.

Music Therapy at WT

The degree program in music therapy began at WT in 1973 with a Registered Music Therapist who started the academic program here and simultaneously developed a clinical training program in music therapy at the Psychiatric Pavilion in Amarillo. After a two-year period, both the WT academic program and the Pavilion clinical program were advanced to full-time status. In 1975, the National Association for Music Therapy, Inc. approved the baccalaureate degree program at WT. Accreditation by NASM was granted for this program after their visitation in 1977.

Music therapy is the use of music in the accomplishment of therapeutic aims: the restoration, maintenance and improvement of physical and mental health. It is the systematic application of music, as directed by the music therapist in a therapeutic environment, to bring about desirable changes in behavior. As a member of the therapeutic team, the professional music therapist participates in the analysis of individual problems and in the projection of general treatment aims before planning and carrying out specific music activities.

Academic preparation for this degree includes: music therapy, 14 semester hours; psychology, 10 semester hours; sociology/anthropology, 6 semester hours; music, 57 semester hours; general education, 37 semester hours; and electives, 6 semester hours. A six-month internship in an NAMI, Inc. approved music therapy program under the direction of a Registered Music Therapist is required in addition to the on-campus course work. This clinical training precedes the granting of the degree in music therapy. Clinical training facilities for internship in Amarillo now include Killgore Children's Hospital in addition to the Pavilion. (Students may choose from some 120 internship facilities in the nation for this portion of their training.)

Students gain practicum experience on levels ranging from observation to lead therapist in the two internship hospitals and also in other settings including the Amarillo State Center for Human Development, Children's Rehabilitation Center, Amarillo Speech and Hearing Center, Panhandle Alcoholic Recovery Center, Underwood Hall, Bivins Rehabilitation Center, plus various individual assignments.

With the opening of Mary Moody Northen Hall, the music therapy program moved to a specially designed area including psycho-acoustical and physiological laboratories, a large lecture-demonstration area, a control room and a 1:1 testing area. Special equipment includes sine wave generators, oscilloscope, Strobocorr for psycho-acoustical demonstration, a Beckman Dynagraph recorder (physiograph) for research in physiological responses to various sound stimuli (including EEG, GSR, EMG, EKG potentials), recording equipment: cassette decks, reel-to-reel deck, turntable, mixers, amplifiers, microphones. We also have recreational instruments including guitars, autoharp, resonator bells, and various rhythm instruments.

There are about 40 music therapy majors this semester at WT. These students have enthusiasm, dedication and unity. The efficacy of music therapy as a vital treatment modality is a part of their experience from the freshman year throughout their academic careers. The reflection of that experience is communicated by every music therapy major.

M.E.

New Faculty

Our new violin instructor is John Sumerlin, who expects to complete his dissertation and doctoral degree from the College-Conservatory of Music in Cincinnati in June, 1979. Mr. Sumerlin has played first violin for the American Symphony Orchestra, the Dallas Symphony, the Santa Fe Opera, and the Cincinnati Symphony Orchestra. He is serving as concert-master of the Amarillo Symphony.

Flutist Sally Turk received her degree, Master of Music in performance, from Indiana University where she was a student of James Pellerite. She has taught flute at Youngstown State University, Oberlin College/Conservatory, Indiana University, and at the Brevard College School for Gifted Students in the Arts. She has played with the Youngstown Symphony, the Blossom Festival Orchestra, and the Detroit Concert Band.

Former Borger High School Choral Director, Steve Paxton, has joined the WTSU music faculty as Assistant Director of Choral Activities. He will be conducting the Collegiate Choir and University Chorus, and will be teaching studio voice, theory and music education. His bachelor's and master's degrees in music are from North Texas State University.

Filling in this year for Robert Krause, who is on a one-year leave to complete his doctorate at the University of Miami, will be Mr. Ted DuBois. He has been a lecturer at California State University in Long Beach since 1974 and is nearing completion of his doctorate in musicology at the University of Southern California. DuBois is serving as principal oboist of the Amarillo Symphony also.

While Mr. Jerry Doan is away this year, on a one-year leave to complete his doctorate at the University of Michigan, his voice studio is being handled by Mr. Lloyd Hanson. Mr. Hanson has taught vocal music in Minnesota public schools since 1956. He holds a 1977 Master of Music in vocal performance from the University of Colorado where he sang the tenor lead in several opera productions. He has to his credit a number of roles with the Minnesota Opera Company; he has also served as vocal vice-president of the Minnesota Music Educators Association.

Mr. Sam Brown is taking the studio for Cheryl Doan while she is off to Michigan with husband, Jerry. Mr. Brown is a 1977 WTSU graduate with a Master of Music in vocal performance.

H.H.

Choral Activities at WT

The National Convention of American Choral Directors Association meeting in Kansas City, Missouri, March 8-10 will be the "biggie" for the WTSU Chorale in 1978-79. The invitation came following a series of tape auditions, the final one being conducted by the Past-Presidents of ACDA.

This nationally exposed concert along with the presentation of the **Brahm's Requiem** with the Amarillo Symphony on December 9, constitute the thrust of anticipation for the year.

However, other involvements are anticipated, including the "Pigskin Review" — homecoming variety show and a concert shared with Collegiate Choir, directed by Steve Paxton on October 15.

On October 27, the Chorale will be presented in concert before the Texas Junior College All-State Choir meeting at Amarillo College.

"New Day Singers" fresh from their "glorious" USO tour to the Caribbean will share a spot in the "Pigskin Review" on October 13. Billy Talley is choral assistant and directs "New Day."

H.S.



Music Faculty, Fall 1978

Alumni News

- 1948 — Carlyn (Wimberly) Montgomery, music major, keeps house for her husband, Bill, at their home in Amarillo. She was a piano student of the late Miss Pauline Brigham.
- 1949 — June (Wimberly) Boston, music major, keeps house for her attorney husband; their home is in Houston. She was a piano student of the late Miss Pauline Brigham.
- 1956 — Patsy (Stovall) Martin, BME, teaches elementary music in the public schools in Englewood, Colorado. Angela, who is in the second grade, and Mike, in third grade, keep Patsy from having much free time.
- 1958 — JoAnn (Herring) Sealy, Fr.-So., writes from Andrews, Texas, that she is a legal secretary in Andrews. JoAnn is a French hornist and until this past year played horn in the Midland-Odessa Symphony Orchestra.
- 1964 — Jeff Doughton, BME, is director of the Pampa High School band. Two outstanding honors have come to this group in the past year: the band participated in the St. Patrick's Day Parade in Dublin, Ireland in 1977, and it has accepted an invitation to take part in the Tournament of Roses parade in Pasadena, California on **New Years Day**, 1979.
- 1964 — **Larry Kingsley**, BME, at present **serving as high school band director** at Vernon, where he has been for the past six years. He and his wife have three children: Vincent, age 13, Lareza, age 10, and Saraya, age 8. Larry also **serves as Executive Secretary of Region II U.M.W. Music**, and is a member of the State Music Advisory Committee.
- 1965 — Noreen (Putnam) Bales, BME, and 1966 Richard Bales, BME, are now living in Nicholasville, Kentucky, where Richard is studying toward a Master of Divinity degree at Asbury Theological Seminary. They are the parents of two children, David and Camille.
- 1968 — Alee (Corrs) Crocker, MA, teaches private piano at her studio in Tulsa, Texas.
- 1972 — Buzzy Green, BME, is currently working on his DMA degree in instrumental conducting at the University of Kansas in Lawrence.
- 1973 — Jim Hutson, MA, is director of the Levelland High School band. Previous to his present assignment, Jim directed the Levelland Junior High School band for four years after serving 6 months in the U.S. Army Signal Corps at Fort Gordon, Georgia. He married the former Frances Neal. Jim and Frances are the parents of Ruth Elizabeth, age 2 and the soon to be parents of another little Hutson whose appearance is scheduled for December. Frances also has her

bachelor's and master's degrees from WT and teaches math in her spare time.

- 1974 — Carol Mahler, BME, writes from Knoxville, Tennessee, that she finished her master's degree in piano literature at the University of Tennessee and since then has been teaching both private and class piano in two different colleges as well as at her home.
- 1974 — Johnlyn Mitchell, MA, teaches class piano in the Dallas school system. Johnlyn visited the campus during the summer to attend the reception held for Dr. Green before his departure for Mississippi.
- 1974 — Randy Reeves, BME, expected to finish his master's degree in composition at East Texas State in Commerce this past summer. Plans for this fall include matriculation at North Texas State as a Ph.D. student in the fields of theory, composition, and computer music.
- 1974 — Layne Lorenson, BME, is now teaching at Stanton Junior High School in Hereford, after spending one year in Raton, New Mexico. He and his wife have two sons, Greg and Randy.
- 1975 — Doug Laramore, BME, and his wife, Patty, are now living in Ada, Oklahoma, after spending two years at North Texas State working on doctoral studies. Doug is assistant band director and brass instructor at East Central University in Ada and also teaches conducting and music appreciation. He and Patty are anxiously awaiting the arrival of their "first little tooter" in late January.
- 1976 — Nicki Caldwell, ex-graduate student, and her husband, Jim, are now living in State College, Pennsylvania, where Jim is studying in the area of the theatre. Nicki misses Canyon and WT a great deal, although she admits that Pennsylvania scenery would be a great inspiration to any painter.
- 1976 — David Robinson, MM, teaches voice and directs the opera workshop at William Jewell College in Liberty, Missouri. He also directs small vocal ensembles and is faculty advisor for Phi Mu Alpha. This past summer he attended the Oglebay Institute Opera Workshop in Wheeling, West Virginia, under the direction of Boris Goldovsky. This fall David will be singing in two productions with the Kansas City Lyric Opera Company. In March, 1977, David and Annette Willis from Senmore, Texas, were married.
- 1976 — Donna (Bogan) Fuel, BME, who is currently teaching elementary music in Kermit, spent last year in the insurance business. She plans to continue her teaching career.
- 1976 — Marc Tuell, Fr.-So., is leaving the music field and plans to start pre-veterinary studies at Texas A and M

soon. Marc and Donna are also now raising AKC registered beagles, so they claim they've really gone to the dogs!

- 1977 — Jim Duggan, BME, holds the position of assistant band director in the Pampa High School.
- 1977 — Kathy (Lynn) Kendle, BME, and Lee 1978 Kendle, MA, recently welcomed a new singer to the Kendle household when Joshua Lynn Kendle arrived on August 26. Congratulations to the Kendles! In his spare time, Lee teaches choral music at the Borger High School. Kathy has no spare time.
- 1977 — Kathy (White) Reeves, MA, and husband, Randy, are the proud parents of a son, John, age 4½ months. Congratulations are in order here also. Mary hopes eventually to teach music, but she has her hands pretty full right now.

Faculty Summer Activities

As one might expect from a large and active faculty, summer activities are varied, ranging from just plain vacations to conducting workshops and attending graduate schools. Margaret Forrest attended North Texas State where she continued her vocal study and had advanced courses in Orff-Kodaly methods. Dr. Hugh Sanders conducted two choral music camps, ours here at WT and at the University of the Pacific in Stockton, California, while Bill Evans, serving in his official capacity as college division chairman, attended TMTA in June. As one might expect, knowing Dr. Palmer, he was engaged in writing an article. It is entitled "Tsanina Blackstone — A Chapter in the History of the American Indian in Opera" and will appear in the fall issue of Liberal Arts Review. Ron Lemon, on the other hand, traveled all the way to the east coast where he played first horn in the New Hampshire Music Festival Symphony Orchestra. He has been featured in the past as soloist and next year will perform a Mozart concerto with the orchestra. Elsa Porter and Mary Ruth McCulley attended Rossini's "Count Ory" in Santa Fe and heard several chamber music concerts of the Taos Music Festival. Martha Estes was busy much of the summer with music therapy activities. She spent ten days the last of May helping ENMU start students in clinical training. In June and July she attended two workshops; one in Behavior Modification at SMU and one in Creative Arts Therapies at TWU. She also planned a Creative Arts Therapy Workshop to be held summer, 1979, at Tres Ritos, New Mexico.

Mention must also be made of the migration to the mountains around Tres Ritos, by the Ritters, Evans, Nelsons, and Durdens. Several other non-music faculty added to the entourage of over twenty people and "Tent City" was established for about a week. A good time was had by all even if Ritter didn't catch many fish.

R.D.

Palmer To Head Graduate Program

This fall, for the first time, the music department has a departmental director of graduate studies. Appointed by Dr. Haines to serve in this capacity is Dr. Dean Palmer. Dr. Palmer's first task is to develop, at the request of the faculty, a set of guidelines that will eliminate the administrative hassles some students might otherwise encounter while pursuing an advanced degree.

With the new facilities available in Northern Hall, graduate study at WTSU is becoming more and more attractive to students. Two programs are available: Master of Music and Master of Arts.

The M.M. is a performance degree and may be earned in all performance areas including choral conducting. Enrollment in the four long-term (fall and spring) semesters is required of all students admitted to the program. The terminal project for this degree is invariably a recital. Besides applied music, the degree plan calls for courses in music theory, history, and literature, and beginning this year, courses in electronic music may be applied against the theory requirement.

The M.A. degree is available in the field of music education, but the course structure in this degree is broad enough to permit the student to concentrate in the areas of composition or musicology if desired. Provision has been made for a student who elects to take the six hours of education courses required for a Professional Education Certificate to apply the same credits against his M.A. requirements. This certificate, however, is not a required part of the M.A. program itself. Any one of four terminal projects may be elected (with faculty approval) by students pursuing this degree: a composition, a transcription, a recital, or a prose thesis. A new regulation passed this year has eliminated the need for a student to write a prose document to accompany a recital, composition, or transcription, thus allowing him to concentrate on the musical skills required for his choice of terminal project. The M.A. program possesses an important feature not available to students in the M.M. program: it may be earned entirely during the summer. This makes it especially appealing to teachers in the public schools, and many students normally in residence only in the summer choose to earn additional credits during the year through directed individual study with a faculty member.

D.P.

NASM Visitation

The National Association of Schools of Music (NASM) is the main accrediting agency for its member schools, among which are most, if not all, of the fine music schools in the nation. Every ten years each member must submit to re-evaluation.

In 1977-78 it was WTSU's turn. So, in the fall of 1977, a music faculty committee wrote a self-study report. In February 1978, NASM sent two investigators to WTSU to perform an on-campus evaluation of such items as facilities, library holdings, student performances,

faculty proficiencies, and degree requirements.

The investigators made their own reports and in June, 1978, the NASM Commissions on Undergraduate and Graduate Studies considered the evidence. We are happy to report that WTSU's application for renewal of full membership has been approved. In NASM's opinion, however, we need more funds for faculty and ensemble travel, for the library, and for maintenance and purchase of musical instruments and playback equipment. Further, they noted that the orchestral programs need strengthening and more non-majors need to be taking music courses.

B.E.

(Editor's Note: Bill Evans was appointed chairman of this important committee and was largely responsible for the very fine report presented to the association on behalf of our department.)

Electronic Music Program

With the completion of Mary Moody Northern Hall, WT now has an excellent electronic music studio for use in teaching, composing, and research. William Davis, who has just returned from a year's leave at the Eastman School of Music where he had extensive studies in electronic music with Wayne Barlow, is the director of the new facility. Mr. Davis is offering beginning and advanced classes for undergraduates and graduate students in electronic music techniques as well as pursuing his own creative work in the studio. Already some students have produced compositions and sound effect tapes which were used last year in the Drama department's production of the play, "J.B." the Dance department's spring recital, and some were played on a number of area radio stations.

The room itself is specifically designed for its purpose. More than 60 "trunk lines" interconnect all parts of the room. This allows all pieces of equipment to be patched together without having electric cords cluttering the

floor. There are five synthesizers of various sizes and types, including 96 stages of sequencing capacity. (That probably doesn't mean a thing to most of our alumni but it is a lot!) The room is equipped for playing, mixing, and editing quadrasonic or stereo tapes.

A few of our students have already done some remarkably good electronic pieces. We anxiously await the exciting things we'll hear as they gain experience and insight in the years ahead under the guidance of Mr. Davis.

J.N.

Jazz Festival!

The big news this fall is the jazz festival on December 2. Clinicians for the festival will be: John Park, formerly lead alto with the Stan Kenton band, Bob Morgan, director of Jazz Studies at the High School for the Performing and Visual Arts, Houston, Texas, Jim Beckham, percussion instructor at WTSU, Bart Edwards, bass player from Amarillo, and David Ritter, trumpet instructor and director of the Jazz Band at WTSU.

The festival will be non-competitive and includes a reed clinic by John Park, a piano and improvisation clinic by Bob Morgan, a drum clinic by Jim Beckham, a bass clinic by Bart Edwards, and a brass clinic by Dave Ritter. At the end of the day there will be a concert featuring the outstanding high school band of the day, the WTSU Jazz Band, and performances by the clinicians.

Other news concerning the jazz program at WTSU is that we are again running two bands. Don Young, a graduate assistant, is leading the second group. We also have two improvisation classes; a beginning class and an advanced class. Also scheduled for this fall are some concerts at the cafeteria, an outdoor concert in the Greek theatre, a concert on November 20, and a concert at Wayland Baptist College.

D.R.



Electronic Music Room

Where Did They Go?

The following information contains the known whereabouts and occupation of our May and August 1978 graduates and includes those receiving both the bachelor's and the master's degrees:

Joe Anderson — singer and dancer at the Stardust Hotel, Las Vegas

James Frank Davis — vocal music teacher at Channing Elementary and Junior High

Ed Harvell — band and orchestra director at Fannin Junior High, Amarillo

Alice Hendley — graduate student at Michigan State

Beverly Johnson — private teacher in Odessa

Marty Marsh — married David Schvotte

Susie McDaniel — married and moved to Tulsa, Oklahoma

Jeff Stevens — graduate student at Arizona State

Pam Sumner — working on master's degree at NTSU

Gary Thrasher — T.A. in voice at WTSU

Rebecca Walker — student at SMU, Dallas

Linda Wise Page — music therapist at psychiatric pavilion, Amarillo — plays in Amarillo Symphony

Randy Blakley — teaches private trumpet in Midland

Leslie Blanchard — T.A. in theory at WTSU

Steve Boaz — studying music therapy at WTSU

Gordon Cloutier — band director at Greenville High School

Bruce Collins — assistant band director at Midland Lee High School

Richard Hall — working on master's degree at NTSU

Carol Hrehor — lives in Conroe, Texas

Russell Hughes — director at Plainview Junior High

John Hunt — Cypress Fairchild ISD in north Houston

Bert James — teaches flute in Midland-Odessa

Linda Kowierschke — secretary in Amarillo
Hugh Lathem — River Road choir, Amarillo
John Owen — assistant band director at Klein High School, Spring, Texas

Cindy Parker — band director at one of the junior high schools in Enid, Oklahoma

Todd Parker — band director at one of the junior high schools in Enid, Oklahoma

Jay Perdue — touring the U.S. and Canada with J. Perdue and Company (see separate story)

Vicki Perdue — touring the U.S. and Canada with J. Perdue and Company

Becky Smith — teaches junior high choir in Odessa

Dorothy Son — teaches elementary music in Waco

John Strothers — assistant band director in Stratford

Andrea Tackett — teaches strings in Amarillo public schools

Billy Talley — T.A. in choral activities, WTSU

Kerry Webb Lorey — teaches at Bluebonnet Elementary School in Hereford

Vern Zimmerman — T.A. in woodwinds at WTSU

Brad Garner — T.A. in band and applied flute at WTSU

Margarete Hardin — employed at the psychiatric pavilion, Amarillo

Jeanie Pool — music therapist in California

Chuck Broussard — assistant band director at Allen, Texas

Fideles Fetsch — assistant band director at Sundown High School — also working on master's at Tech

Cynthia Johnson — teaches elementary school music at Dumas

Samuel Brown — T.A. in voice and piano at WTSU

Linda Johnson — studying and working in New York City

Lee Kendle — teaches choral music at Borger High School

Kathy McNeil — private voice instructor at Hardin Simmons

Catherine Montgomery — plans to study in New York City

Ronald Montgomery — plans to study in New York City

Christine Wright — student in the doctoral program at the University of Texas, Austin

Sheryl Anderson — owns boutique in Amarillo

Mary Jane Johnson — teaches voice at Amarillo College

Gary Mingus — touring U.S. and Canada with J. Perdue and Company

Bruce Ford — transferred to Tech

We have no information on the following people:

Della Jane Hewett

Juan Blanco

Jan Ramey

Rebecca Ware

Terri Miller

If anyone knows the whereabouts of these people we would appreciate very much your sending us this information.

N.B.

Please do remember to send us information about yourself, as well as suggestions for further issues of RITORNELLO.

New Class Piano Lab

One of the special classrooms in the Mary Moody Northern Hall is the electronic piano laboratory. Class piano has been successfully taught at West Texas for a number of years and we are especially proud of this new seventeen-unit lab, consisting of sixteen student pianos and a teacher's piano. These pianos are equipped with headsets and microphones, enabling the teacher to communicate with individual students or with the class as a whole, thus setting up many opportunities for individual instruction as well as ensemble and duet playing.

All music majors must take piano until a proficiency test is passed. Approximately one hundred students are enrolled in class piano this fall; more advanced students are enrolled in private lessons. Future plans include having all secondary piano students enter a piano class on one of three levels until the proficiency barrier is completed.

Music majors taking piano for the first time find class piano particularly effective because of the group situation — hearing others play, ensemble playing, playing in front of others, as well as some supervised piano practice periods and regular sight reading sessions.

Bill Evans and Mary Helen Demus are teaching the piano classes at the present time.

M.H.D.



Class Piano Lab

Address Correction Requested

P.O. Box 879
 Canyon, Texas 79106

WEST TEXAS STATE UNIVERSITY

DEPARTMENT OF MUSIC

W S T W RECITALS

BULK RATE
 U.S. Postage
 PAID
 PERMIT NO. 22
 Canyon, Texas

Calendar of Events 1978

October - December

Oct. 19	4:00 p.m.	Paul Schenly Rap Session, Choir Room	Nov. 20	8:00 p.m.	Jazz Band Concert
Oct. 23	4:00 p.m.	Senior Recital, Russ Blanchard, Tuba, BME	Nov. 21	8:00 p.m.	Faculty Recital (Trio)
Oct. 24	All Day	Marching Contest	Nov. 27	4:00 p.m.	Senior Recital, Pete Demus, Saxophone, BMT
Oct. 24	8:00 p.m.	Harp Ensemble, (Phi Mu)	Nov. 29	4:00 p.m.	Senior Recital, Janet Claypoole, Horn, BME
Oct. 25	4:00 p.m.	Senior Recital, Sherri Dawson, Piano, BME	Dec. 2	All Day	Jazz Band Festival
Oct. 25	8:00 p.m.	Recital, Young Concert Artists	Dec. 3	3:00 p.m.	All Chorus in Concert, Hugh Sanders and Steve Paxton, conductors
Oct. 26/27	8:00 p.m.	Variety Show, Phi Mu, BIT	Dec. 4	4:00 p.m.	Senior Recital, Art Owen, Trumpet, BME and Gloria Pleyer, Flute, BMT
Oct. 27/28	All Day	WTSU Hosts "American Society of American Composers" Regional Meeting	Dec. 6	4:00 p.m.	Senior Recital, Carla Swartzell, Voice, BM
Oct. 29	3:00 p.m.	University Orchestra, Dr. Garner, conductor	Dec. 6	8:00 p.m.	American Composers Concert (Faculty and Students)
Oct. 30	3:00 p.m.	Suzuki Workshop	Dec. 8	4:00 p.m.	Senior Recital, Bobby Fishback, Tuba, BME
*Oct. 30	3:00 p.m.	Suzuki Concert	Dec. 10	3:00 p.m.	Concert Band, Dr. Garner, conductor
Oct. 31	8:00 p.m.	Octubafest (Low Brass)	Dec. 10	8:00 p.m.	Symphonic Band, Dr. Garner, conductor
Nov. 6	4:00 p.m.	Senior Recital, Carl Lorey, Voice, BME	Dec. 11	4:00 p.m.	Special Student Recital
Nov. 15	4:00 p.m.	Senior Recital, Charles Johnson, Saxophone, BME & Homer Chapa, Saxophone, BME	Dec. 13	4:00 p.m.	Special Student Recital
*Nov. 16/17 18	8:00 p.m.	WTSU Opera, "Samuel," BIT			
*Nov. 19	2:00 p.m.	WTSU Opera, "Samuel," BIT			
Nov. 20	4:00 p.m.	Senior Recital, Dandy Daw, Trumpet, BME, & Sharon Trotter, Voice, BME			

* Admission Charged
 All programs in Northern Recital Hall unless noted otherwise